



**JOINT OR BOX?  
CHOOSE BABY BOX!**



#### Electrical performance:

- CEI EN 50393 as applicable
- Class 2 in accordance with CEI 64-8.

**Gel:** UL 94-HB

**Installation temperature:**  
-40°C / +50°C

**Working temperature:** 90°

**Gel operating temperature:**  
-60°C / +200°C

**Fully submersible**

**Can be used underground**

**Halogen-free Gel**

**UV resistant**

**Self-extinguishing and resistant to abnormal heat and fire:**  
Glow Wire Flammability Index at +960° C according to EN60695-2-12

## BABY BOX

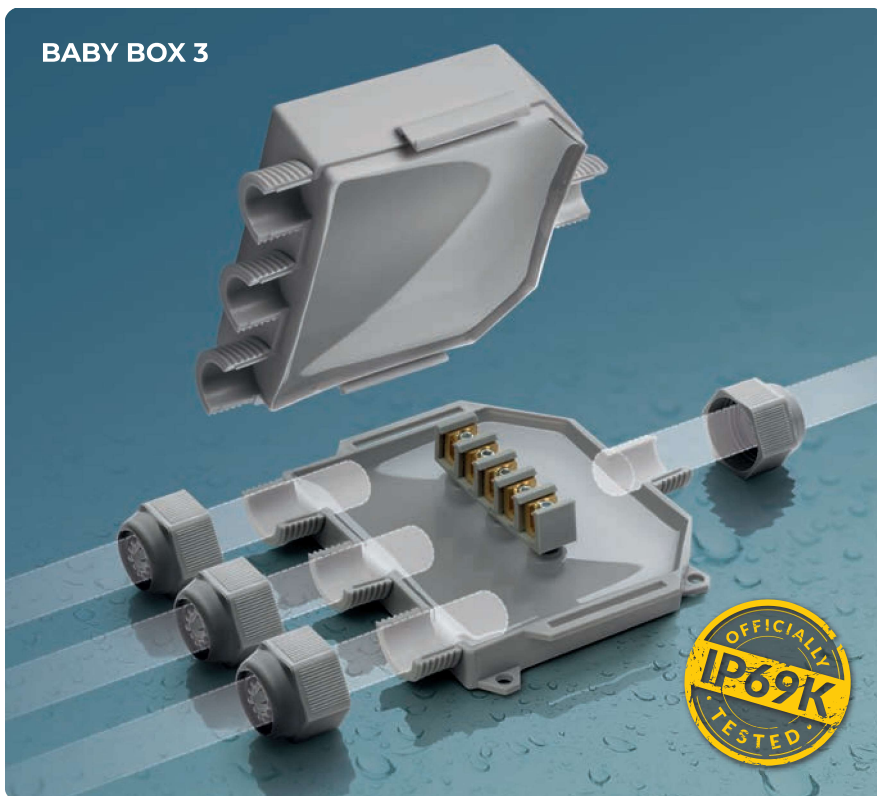
Pre-filled boxes (1 to 2) – (1 to 3)  
with integrated terminal block and clamping nuts.

BABY BOX is the range of ready to use boxes/junction boxes, complete with terminal block and a kit of components that allow its use with cables from 8 to 18 mm in diameter and ducts from 16 to 20 mm in diameter. Nothing to pour and no waiting times as it is already pre-filled with a non-toxic gel, not classified as dangerous and with no shelf life, which insulates and seals the connection thoroughly and gives to the range the maximum of reliability; the accessory is ideal for underground, submerged or aerial installations. BABY BOX, 3-entrances box with three-pole terminal block and BABY BOX 3, 4-entrances box with five-pole terminal block, are available in grey or black, they are very simple to install and equipped with external holes for wall fixing.

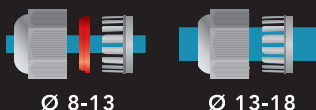
#### ADVANTAGES

- Pre-filled with a gel that is not-classified as hazardous under the CLP Directive.
- Ready to use.
- Also suitable for wet or flooded environments.
- Always re-enterable.
- Wall or external ceiling fixing system.
- Click and hook closure, does not require screws.
- No shelf life.

#### BABY BOX 3



#### CABLES



Ø 8-13

Ø 13-18

#### TUBES



Ø 16

Ø 20

**IP68**  
OFFICIALLY  
TESTED

**IMQ**

**IP69K**  
OFFICIALLY  
TESTED